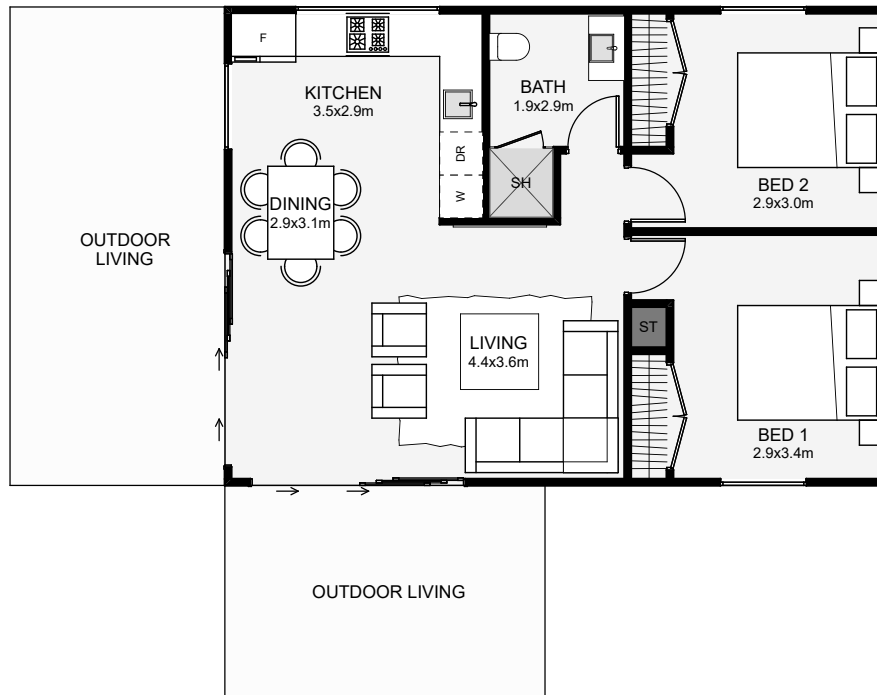




Small and modern, this two-bedroom dwelling is a perfect mix of style and usable space. Inside, the open plan living, dining and kitchen help maximise usable space within such a small footprint. This small home is sure to maximise the land it sits on whether that's in the backyard or at the beach!



Floor Area: 62m²

 0
  2
  1
  1
  9.3m
  6.7m

Contact us:

Ph: 021 143 0336

E: admin@asbuilders.co.nz

 www.asbuilders.co.nz