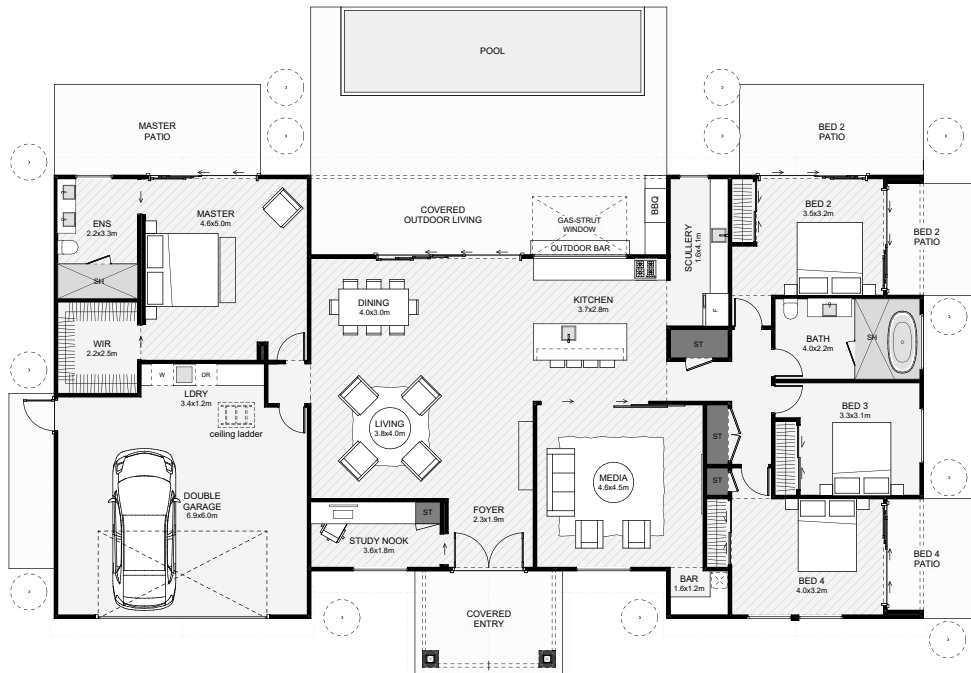




This perfectly symmetrical home lays the foundation for your ultimate lifestyle home. The master, in a private wing, has a large walk-in wardrobe and ensuite. The open-plan living positions the kitchen and dining at the centre of your indoor/ outdoor living, extending into a fully covered outdoor living space with an inbuilt kitchen and bar! Other features of this home include a hidden study close to the living, an in-built bar in the media room, a scullery that'll have you feeling organised and bedrooms with covered patios perfectly positioned for the morning sun. If you're looking for a family home that everyone can be excited about, this is it!



Floor Area: 250m²

 2  4  2  2  23.9m | 13.5m

Contact us:

Ph: 021 143 0336

E: admin@asbuilders.co.nz

 www.asbuilders.co.nz